



JOHNS HOPKINS
M E D I C I N E

2023

IMPACT REPORT

THE JOHNS HOPKINS MEDICINE
ALUMNI ASSOCIATION



THE JOHNS HOPKINS MEDICINE ALUMNI ASSOCIATION

The Johns Hopkins Medicine Alumni Association (JHMAA) is inclusive of all our 35,000 alumni including all degree holders, and former trainees, fellows and faculty. The Johns Hopkins Medicine Alumni Association is committed to strengthening relationships between our alumni and institutions; improving quality of life and providing educational opportunities for students, fellows, and house staff; and keeping our community informed and connected.

FUNDING INITIATIVES

STETHOSCOPES & WHITE COATS

The Johns Hopkins Medicine Alumni Association provided 118 stethoscopes and white coats to first year MD students, and 120 white coats to PhD students marking their transition from PhD student to candidate. Both fundraising campaigns exceeded their goals.



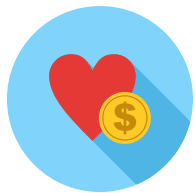
STUDENT SCHOLARSHIPS & AWARDS

The Johns Hopkins Medicine Alumni Association Centennial Endowed Scholarship helps medical students pay their educational expenses. In FY23, the \$5,000 scholarship went to a talented 4th year student. The association also sponsored five Young Investigator Awards for postdocs and fellows.



ORGANIZATIONAL SUPPORT

The Johns Hopkins Medicine Alumni Association provides annual financial support to the House Staff Council, Graduate Student Association, the Johns Hopkins Postdoctoral Association, the Medical Student Society, and the Office of Cultural Affairs.



JOHNS HOPKINS MEDICINE MAGAZINE

The Johns Hopkins Medicine Alumni Association continues to financially support *Johns Hopkins Medicine Magazine*, and contributes stories, class notes and obituaries. The magazine is published three times per year and reaches 32,000 subscribers.





2023 REUNION AND ALUMNI WEEKEND

On June 1-4, The Johns Hopkins Medicine Alumni Association and the School of Medicine hosted the 2023 Reunion and Alumni Weekend. Alumni and friends returned to campus with many memorable opportunities to reconnect, discover, and celebrate. Highlights included celebrating reunions for class years ending in 3 and 8, the Reunion Symposium with keynote speaker Selwyn Vickers, Med '86, President and CEO of the Memorial Sloan Kettering Cancer Center; the inaugural Graduate Student Alumni Reception; the presentation of alumni awards and portraits; and presentations by students and faculty.

- **500+** alumni and friends registered to attend in-person and via livestream.
- **\$15,007,169** raised by Reunion and Grand Classes supporting the School of Medicine, exceeding the original fundraising goal of \$6,750,000.
- **37+ programs** were offered throughout the weekend in addition to **15+ alumni dinners and gatherings.**
- **15 awards and portraits** presented honoring distinguished alumni.
- **94 students, alumni, trainees, and faculty** registered for the Underrepresented in Science and Medicine Reception at the Four Seasons Baltimore.
- **167 students, alumni, trainees, and faculty** registered for the first ever Graduate Alumni Reception at the Four Seasons.





JHM ALUMNI ASSOCIATION GRANT PROGRAM

To support all learners and foster community at the School of Medicine, the Johns Hopkins Medicine Alumni Association launched this grant program to fund innovative projects led by SoM students, house staff and fellows to address current needs on campus. In FY23, we were proud to launch the Paul B. Rothman Student and Trainee Wellness Grant Program to provide up to 10 grants annually for initiatives that improve the health and well-being of students and trainees. Included is more information about all the grants we awarded this fiscal year.

22

APPLICANTS*

5

ROTHMAN WELLNESS
GRANT APPLICANTS*

\$7K

ROTHMAN WELLNESS
FUNDS REQUESTED &
AWARDED

\$29K

TOTAL FUNDS
REQUESTED &
AWARDED

\$4,000

CONTRIBUTED TO THE GRADUATE EMERGENCY
FUND

* All applicants were awarded grants.

**ZENMED**

\$1,490 to support a comprehensive afterschool yoga, meditation and mindfulness program for Baltimore City Elementary and Middle School students.

SCHOOL OF MEDICINE

**HIGH VALUE CARE DAY**

\$982 to support a day where any student, fellow, or trainee is able to gain insight into the principles of high value care. This seminar will include speakers and networking opportunities.

SCHOOL OF MEDICINE

**PERRY INITIATIVE
OUTREACH PROGRAM**

\$1,500 to support an outreach program to engage local high school women in orthopaedic surgery through a partnership with the Perry Initiative. A day-long program includes speakers and hands-on activities.

SCHOOL OF MEDICINE

**IMPERFECT ROUNDS**

\$1,500 to support a moderated, virtual, and in-person panel series showcasing prominent faculty, fellows, and alumni who have overcome challenges in their medical careers, including failure, imposter syndrome, and mental health issues.

SCHOOL OF MEDICINE

**THE DINING RHEUM: A
SUPPER CLUB**

\$1,500 to support a quarterly supper club for current fellows. Distinguished rheumatologists will be invited to discuss their insights and experiences.

RHEUMATOLOGY

ROTHMAN WELLNESS GRANT

**MENSTRUAL PRODUCTS
FOR JHU EAST
BALTIMORE CAMPUS
RESTROOMS**

\$1,500 to equip campus restrooms with menstrual products for free.

GENETIC MEDICINE

**URIM ADMITTED STUDENTS
LMSA-NE CONFERENCE**

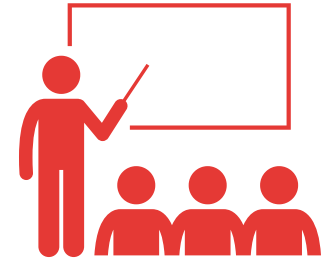
\$1,500 to support the attendance of underrepresented in medicine students, particularly Latino-identifying students, at the 50th Annual LMSA-NE Regional Conference.

SCHOOL OF MEDICINE

**EXPANDING MEDWIKI'S
SCOPE**

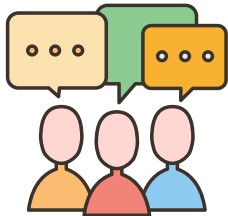
\$1,240 to support the expansion of Johns Hopkins' medWiki, a wiki created by Hopkins med students to help others navigate medical school and life at Hopkins.

SCHOOL OF MEDICINE

**DISTINGUISHED TEACHING
SOCIETY**

\$1,500 to support this student-created and led organization that recognizes, encourages, and supports master clinical educators.

SCHOOL OF MEDICINE

**LMSA-NE 50TH ANNUAL
REGIONAL CONFERENCE**

\$1,500 to support hosting the conference, which brings together pre-medical and medical students, and physicians from across the Northeast for a weekend of conversations, workshops, dialogue, and networking.

SCHOOL OF MEDICINE

**THE BEAN INITIATIVE:
BOOSTING ENGAGEMENT
AND ADVISING IN
NEPHROLOGY**

\$1,485 to implement an advising system enabling 1st year fellows to meet faculty over meals and expand the mentorship pool to include upper-level fellows.

NEPHROLOGY

ROTHMAN WELLNESS GRANT

**STUDENT ART AND
WELLNESS SPACE IN AMEB**

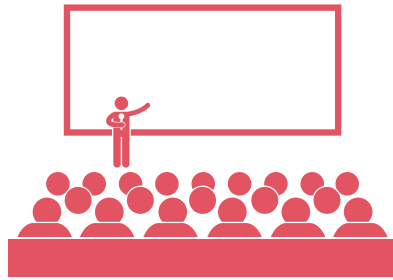
\$1,500 to create a space in AMEB dedicated to arts, wellness, and relaxation for medical students. The goal is to improve student well-being through increasing accessibility to art, mindfulness activities, and relaxation.

SCHOOL OF MEDICINE

**15TH ANNUAL MILESTONES EVENT**

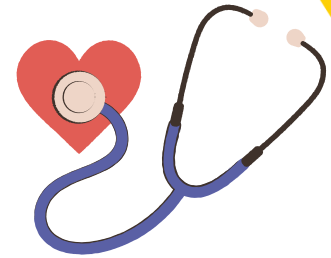
\$1,500 to support the Biomedical Scholars Association's Milestones event celebrating the accomplishments of current graduate and postdoctoral underrepresented minorities.

CELLULAR AND MOLECULAR PHYSIOLOGY

**BSA: HILDRETH LECTURE**

\$1,500 to support the annual lecture in honor of Dr. James E. K. Hildreth, Hopkins' alumnus and the first Black professor to be promoted to tenure at the School of Medicine. The goal is to amplify the work of scientists of color and provide opportunities to connect with doctoral students of color.

CELLULAR AND MOLECULAR PHYSIOLOGY

**WOMEN IN CARDIOLOGY: SUPPORTING FUTURE LEADERS**

\$1,500 to support a mentorship program for residents interested in cardiology. A mixer for alumni, faculty, and residents to meet mentors/mentees will also be supported.

INTERNAL MEDICINE

**OSLER RESIDENCY FORMAL EVENT**

\$1,500 to support Osler Prom, an evening where residents dress up and bring their partners to dine and dance with their resident family.

INTERNAL MEDICINE

ROTHMAN WELLNESS GRANT

**RESIDENT WORKROOM BEAUTIFICATION PROJECT**

\$1,000 to purchase cleaning supplies, plants, furnishings, organizational supplies, and seasonal affective disorder light panels.

EMERGENCY MEDICINE

ROTHMAN WELLNESS GRANT

**PLASTIC SURGERY PEER MENTORSHIP PROGRAM**

\$1,500 to support a peer mentorship program to promote resident wellbeing and success.

PLASTIC AND RECONSTRUCTIVE SURGERY

ROTHMAN WELLNESS GRANT



WEGO FOUNDATION

\$1,500 to support a program using telepresence robots that enable hospitalized children to remotely experience attractions such as aquariums and zoos.

SERVICE



PATHWAYS INTEREST GROUP

\$1,000 to support a project aimed at exposing current students to pathology career options via facility tours, hands-on demonstrations and experiences, and shadowing sessions with current faculty and residents.

SCHOOL OF MEDICINE



ARTS IN MEDICINE (AIMS)

\$1,500 to support a space in AMEB dedicated to arts, wellness, and relaxation for medical students. This initiative is in partnership with ZenMed.

SCHOOL OF MEDICINE



HOPKINS GLOBAL HEALTH COLLECTIVE

\$1,200 to support increasing medical student access to global health opportunities across the university to make global health clinical service and research more accessible.

SCHOOL OF MEDICINE



JOHNS HOPKINS
M E D I C I N E

Alumni Association

For more information about Johns Hopkins Medicine Alumni Association,
visit us at: <https://www.hopkinsmedicine.org/som/alumni/jhmaa/>